

COVID-19 Antigen tests

As a point-of-care (POC) designated test with a 10 minute processing time, COVID-19 Antigen Tests allow for effective screening/ diagnosis of COVID-19 infection on a large scale.



HOW IT WORKS

The COVID-19 Antigen Test is a lateral flow immunochromatographic assay for the detection of extracted nucleocapsid protein antigens specific to SARS-CoV-2. Specimens are collected via nasopharyngeal swab from asymptomatic or symptomatic individuals who wish to rule out of COVID-19 infection. EUA Authorized - CLIA Waived.

Sensitivity (true positives) 100%
Specificity(true negatives) 87.6%

The Test

- ✓ Lateral flow assay
- ✓ Rapid results in 10 minutes
- ✓ Minimally invasive nasal Pharyngeal collection
- ✓ Detects SARS-CoV-2 nucleocapsid protein antigen
- ✓ Identify acute infection with high sensitivity and 100% specificity

(POC) CLIA Waived

Point-of-care (POC) COVID-19 Antigen tests provide results within minutes of the test being administered, allowing for rapid decisions about patient care. POC tests can also extend testing to communities and populations that cannot readily access care. POC tests are used to diagnose COVID-19 in various settings, such as:
Physician offices - Urgent care facilities - Pharmacies -School health clinics- Long-term care facilities and nursing homes - Temporary locations, such as drive-through sites managed by local organizations

PRICING

\$30 per kit x 20 kits (\$600 per case)
One case minimum order

[CLICK HERE TO ORDER](#)

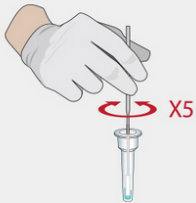
AllerCyte

Dr. James Raker DC
jraker@arklatexhealthclinic.com
870-773-7246

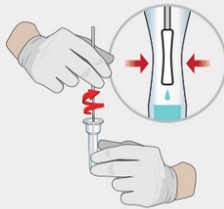
4 easy steps to test

PROCEDURE

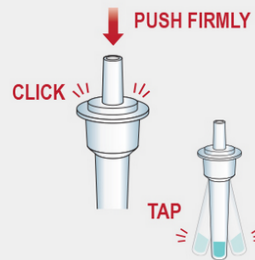
1 Peel off aluminum foil seal and rotate the swab inside the extraction vial vigorously at least 5 times



2 Remove the swab by rotating against the extraction vial while squeezing the sides of the vial to release the liquid from the swab. Properly discard the swab.



3 Close the vial by pushing the cap firmly onto the vial and mix thoroughly by flicking the bottom of the tube.



4 Invert the extraction vial and hold the sample vertically above the sample well. Squeeze the vial gently. Allow three (3) drops of sample to fall into the sample well.

